

1733 Goliad Drive  
Garland, Texas 75042

Phone: 972-487-5634  
[www.adairinspection.com](http://www.adairinspection.com)

**Infrared Electrical Systems & Distribution Inspections What Can Be Detected:**

- Harmonics
- Heat Exceptions
- Imbalanced Loads Inductive
- Loose/deteriorated connections
- Open Circuits
- Overloads

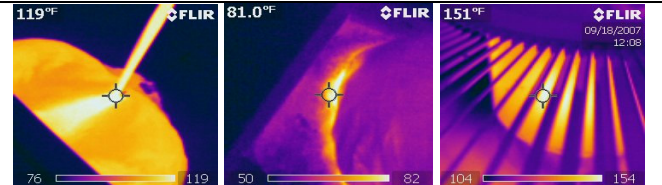


**Benefits:**

- drastically reduce costly, unscheduled power outages identify potentially dangerous and hazardous equipment
- locate problems quickly, without interrupting service, minimize preventive maintenance time and maximize troubleshooting effectiveness
- prevent premature failure and extend equipment life, reduce insurance premiums and deductible payments

**Infrared Mechanical Systems Inspections What Can Be Detected:**

- Defective Equipment
- Excessive friction
- Misalignment of coupled equipment
- Over/under lubrication of bearings
- Over/under tension of belted systems

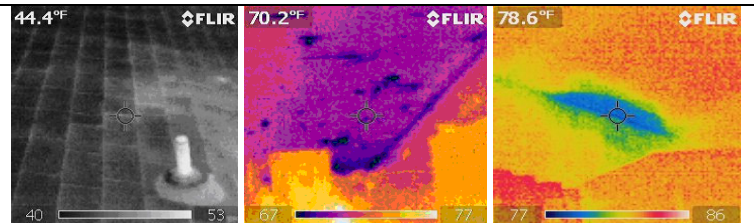


**Benefits:**

- improve worker productivity and morale by correcting potential problems proactively
- increase equipment reliability and life, increase production and efficiency while saving energy
- increase quality of product, quickly locate misaligned coupled equipment
- minimize downtime by planning the required manpower and materials before shutdown

**Infrared Commercial & Residential Roof Inspections What Can Be Detected:**

- Installation defects
- Leak detection
- Material defects
- Moisture intrusion



**Benefits:**

- document problems before the warranty expires
- eliminate unnecessary replacement of good roof, extend the life of the existing roof
- pinpoint water-damaged roof areas quickly and accurately
- provide facts for planning repairs and accurate budgets

**Infrared Building Science Structural/Mechanical Energy Loss Inspections What Can Be Detected & Benefits:**

- evaluate the thermal performance of retrofits/repairs
- identify costly air leakage and energy losses
- locate absent, improperly installed, displaced or damaged insulation
- provide hardcopy proof of problems/repairs
- reduce heating and cooling energy costs

